

**GALLOWAY CATTLE**

**IN**

**NEW ZEALAND**

---

Printed by Coulls Somerville Wilkie Ltd., Wellington.

---

**THE GALLOWAY CATTLE SOCIETY OF N.Z. (Inc.)**

**G.P.O. Box 58**

**Wellington**

# GALLOWAY CATTLE

(Black & Duns)

**Some facts  
about this famous  
Scottish Beef Breed**

---

*Issued with the Compliments  
of the*

**GALLOWAY CATTLE SOCIETY  
OF NEW ZEALAND (Inc.)**

*for the information of*

STOCK & STATION AGENTS      FREEZING COMPANIES  
FARMERS      BUTCHERS      STOCK BUYERS

*and all interested in*

**GOOD BEEF**

*and its economic production.*

The Galloway Cattle Society of N.Z. (Inc.)

G.P.O. Box 58, Wellington

# "MERRICK" GALLOWAY STUD

Brunswick, No. 1 R.D., Wanganui :: Phone 49-913



## GLAMIS OF MERRICK

Breed Champion—**Auckland Royal**

Champion Yearling Heifer—**Palmerston Royal**

This stud was founded during 1951, on the most reputable blood lines. Since then other importations from Scotland have been made, including "Cain of Graigmuie" a son of "Elite of Gateside", one of the most notable sires in Scotland of recent years.

At the Castle-Douglas sales of 1960, "Caliph of Lochurr" was bought out to head the Merrick Galloways. His first son was shown at the Royal Show in Hastings this year and he was judged the Champion Yearling Bull.

Bulls and females are available at reasonable prices.

Enquiries to . . .

**J. H. LITTLEJOHN**

## Galloway Cattle

Galloways are possibly the most rapidly expanding of all British Beef breeds, and this expansion, not only at home, but in many countries overseas, is based on the realisation that here is a breed which has a great deal to offer to the discriminating breeder. As a concrete example of this expansion, the Galloway Sales in Castle Douglas, Scotland, are now the second largest Pedigree Beef Cattle Sales in Great Britain. At the Royal Highland Agricultural Show in Edinburgh, which sees the greatest assembly of breeding beef cattle in Britain, Galloways have won the supreme overall inter-breed Competition for a group of four breeding animals three years in succession.

What is the basic reason for this expansion and success? Simply that the Galloway is now recognised as being capable of producing the finest quality beef under the most economical conditions. Originating in the Scottish hills, the Galloway thrives under free range conditions, upon type of land where other breeds could not exist, and can economically convert their inferior pastures into substantial body-growth. At the same time, upon the better pastures, the Galloway can mature rapidly and hold its own against any other breed.

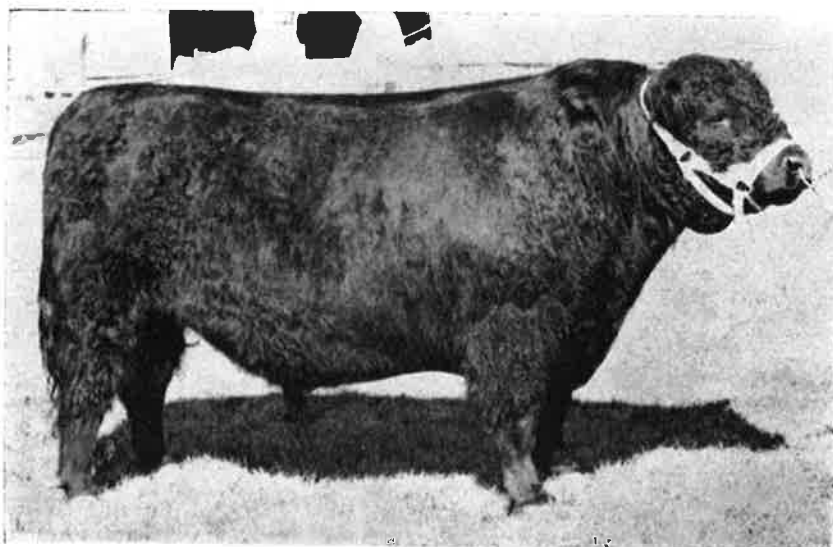
The Galloway, from its original natural habitat, has an inherent ability to withstand the most extreme climatic conditions of wind, heavy rain, cold and snow, and the breed's increasing popularity in countries with more tropical climatic conditions, speaks for its adaptability.

With a world shortage of beef, accentuated by large tracts of land hitherto thought unsuitable for beef production, cattlemen the world over went out in search of a breed which might thrive and yet produce quality meat in these areas. They sought good bone-structure and sound feet and legs (the first essentials), an animal that was a good forager, could travel long distances in search of food and could best use inferior pastures. The Galloway has measured up to these requirements, producing at the same time a carcass of the highest quality, yielding the maximum amount of lean meat.



# MASSEY UNIVERSITY COLLEGE GALLOWAYS

FOUNDED ON PURE SCOTTISH BLOOD



**RIVAL OF TAREE** (Present Herd Sire)



Bred and reared on the Fitzherbert Hills.

This Stud has exhibited the Royal Champion bull in 1952, 1954, 1956, 1957, 1959 and 1962. Also the three Royal Champion Females and two Reserves.



Stud and Run Bulls for Sale.

Enquiries:

## MASSEY UNIVERSITY COLLEGE OF MANAWATU

PALMERSTON NORTH

## BRIEF HISTORY OF THE BREED

Herds of Galloway Cattle have existed in Great Britain for a known period of 300 years. Prior to 1800 few of the beef breeds we know today were in existence, or if they were they scarcely resemble the breeds we are familiar with. Among the few exceptions recognizable 200 years and more ago, the Galloway is the only polled one.

For a breed to exist through all the changes which have taken place during the past 300 years and still to remain among our top beef breeds, indicates considerable merit.

A writer in 1810 (Lawrence) refers to the breed as the most celebrated and favoured in Scotland, where every breeder will boast of his true Galloways. The Herd Book of the Galloway Cattle Society was started in 1877.

## GALLOWAY CATTLE IN NEW ZEALAND

Galloway Cattle were introduced into New Zealand in 1947 by the importation of the bull, Perseus of Lochurr by Lt./Col. E. R. Winkler, followed in 1948—that is 14 years ago—by the arrival of several shipments from Scotland to form the nucleus of several studs. There are now forty studs with over 1,100 purebred animals. Over the past few years a number of top quality importations have been made from Scotland—these have come from among the best herds in that country.

## CHARACTERISTICS of the GALLOWAY BREED

**COLOUR.**—Black, with a brownish tinge, or dun. (They should not be confused with the Belted Galloway which, though their records are included in a separate section of the Herd Book, is an entirely separate breed.)

**HEAD.**—Short, and wide, with broad forehead and wide nostrils, without the slightest symptoms of horns or scurs.

**EYE.**—Large and prominent.

**EAR.**—Moderate in length and broad, pointing forwards and upwards, with fringe of long hairs.

**NECK.**—Moderate in length, clean, and filling well into the shoulders; the top in line with the back in female, and in a male naturally rising with age.

**BODY.**—Deep, rounded and symmetrical.

**SHOULDERS.**—Fine and straight, moderately wide above.

**BREAST.**—Full and deep.

**BACK and RUMP.**—Straight.

**RIBS.**—Deep and well sprung.

**LOIN and SIRLOIN.**—Well filled.

**HOOK BONES.**—Not prominent.

**HIND QUARTERS.**—Long, moderately wide and well filled.

**FLANK.**—Deep and full.

**THIGHS.**—Broad, straight, and well let down to hock.

**LEGS.**—Short and clean with fine bone.

**TAIL.**—Well set on, and moderately thick.

**SKIN.**—Mellow, and moderately thick.

**HAIR.**—Soft and wavy, with mossy undercoat.

## GLEN INNES

Founded in 1958 with a top bull and female from the Claverhouse Stud and two excellent females from the Taree Stud. Four more top females were later purchased from Taree.

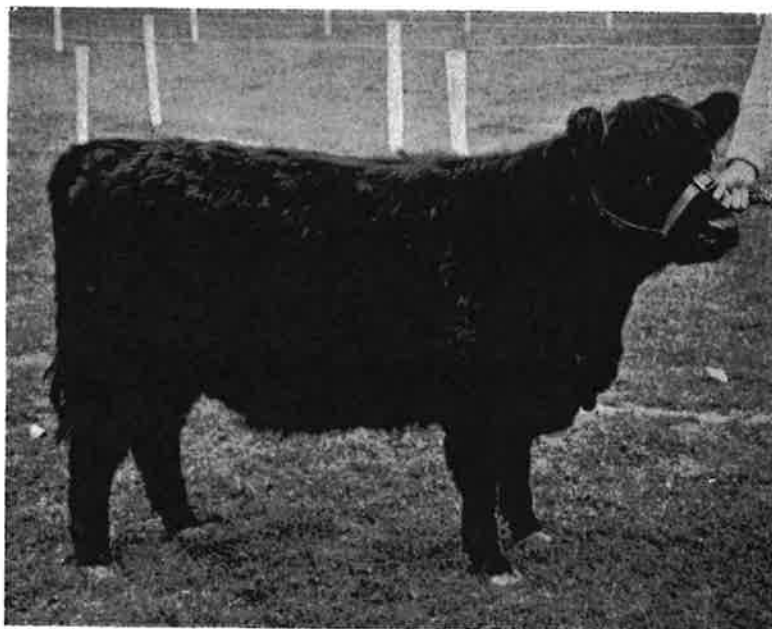
Glen Innes Galloways, shown for 4 years at Te Kuiti Show gained 11 Championships and 9 Reserves. Galloway/Crossbred steers have been placed on the hooks when shown at Te Kuiti in very large class. Glen Innes has for Private Sale, the Show Bull, unbeaten for 4 years, Argyle of Glen Innes at 150 guineas.

*This small but select Stud can be inspected by appointment.  
Visitors are welcome. Situated 1½ miles North of Cambridge  
on Number 1 Highway.*

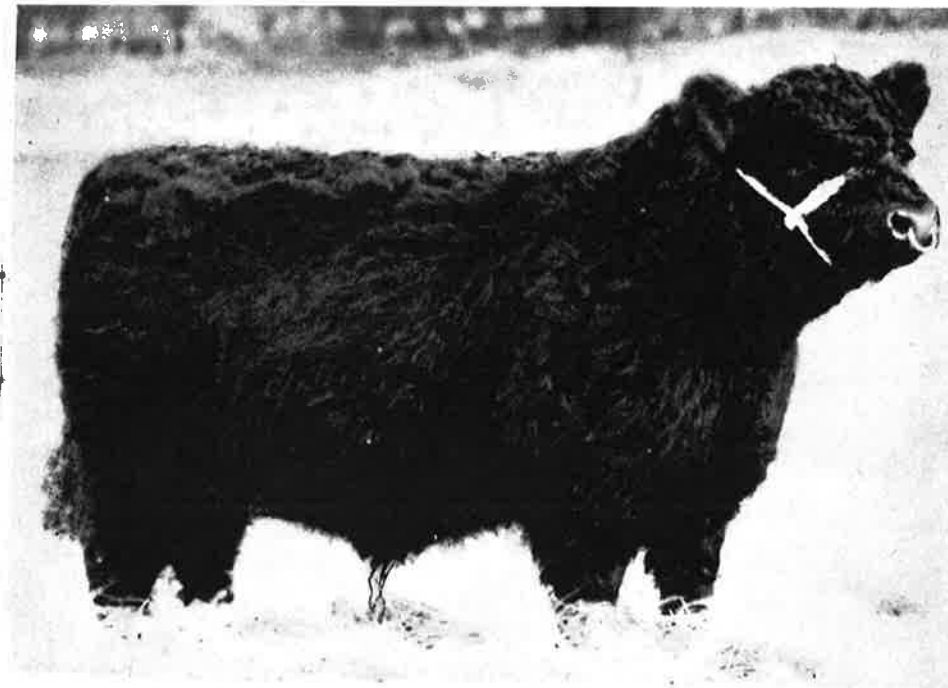
### A. T. SMITH

Hamilton-Cambridge Road, Cambridge

P.O. Box 163, Cambridge :: Phone 7360



A Galloway Yearling.



### A HARDY BREED

There are no cattle anywhere so hardy, for the home of the Galloway is in the bleak exposed Highlands of south-west Scotland and Northern England. With their rich, double thick coat they can withstand the rigours of the worst winters; can thrive and actually build up weight under these conditions and eventually take their place in the fattening paddocks and become beef second to none and frequently supreme in quality when judged by Smithfield standards. They are free from disease—tuberculosis and woody tongue is practically unknown among them.

New Zealand needs beef animals able to thrive not only on good pastures, but, far more important, on the hills and marginal lands of which there is so much in both Islands.

Although developed for cold wet conditions Galloways do equally well on hard dry hill country.

### A CROSSING ANIMAL

When crossed with other breeds the prepotency of the Galloway has been illustrated in many tests, and the product is an animal of a very high order. The Galloway bull invariably leaves polled cattle, and a very uniform type of animal—a short-legged, blocky wide-topped beast. It is a pleasure to look over a line of Galloway-cross yearlings left by a Galloway bull.

The famous blue-grey, so popular with butchers, is the result of a Galloway-Shorthorn cross. This cross is unsurpassed for uniformity in colour, type and general hardiness, and as early maturers with a high percentage of meat of the finest quality.

# PAPAROA GALLOWAYS

ESTABLISHED 1961



*Some of the herd grazing on hill country.*



Founded by the purchase of females from Mr. R. G. Buckleton's "Claverhouse" Stud and Fergus of Little Mt. Royal from Mr. R. G. Carrington Palmerston, Otago.

*Stock bred in a climate that suits Galloways  
in the shadow of Mt. Ruapehu.*



**Bulls and Females for Sale:**

**Enquiries and Inspection Invited.**

**HARRY H. BROWN**

MIDDLE ROAD, RAETIHI, PHONE 58-W

## ECONOMIC TO FEED

The Galloway has an inherent capacity to make use of rough hill grasses without stomach disorders. They possess a strong grazing instinct and will work over their ground fair weather or foul. No cattle will give such a good return for the food supplied. The same quality which enables the Galloway to subsist on poor conditions will make it thrive remarkably on good. They are the answer to economic beef production combined with quality of meat.

## TOP QUALITY BEEF

Some butchers and stock buyers mistakenly regard the double thick coat of the Galloway as an indication of coarseness. You need only pinch the skin and feel the mellow softness to know that underneath is butcher's meat of top quality.

In the annual "Carcase" competition at the Smithfield Show the Galloway has frequently won the Championship and sometimes the "Reserve" as well.

In New Zealand, Galloways, relatively minute in numbers compared with other breeds, have been highly placed in inter-breed competitions. At the Dunedin Winter Show, Galloway cross cattle have on two occasions won the Master Butcher's Cup which is the premier award of the Show.

This report from Smithfield on 40 quarters of Galloway beef shipped from New Zealand is evidence of its high ranking for the chilled beef trade:—

"They were of high quality, being well and evenly covered and showing good selvage of fat at the cut facings. They were very thick in the buttock, full in the loin, with a good eye at the wing ends. The meat was an excellent colour, the cut facings being a nice bright red, while the fat was a good creamy colour which had retained an excellent bloom. This breed presented a most attractive appearance. They were **REAL BUTCHERS' MEAT**—much sought after and would, in our opinion, maintain a competitive price on the firmest of markets."

## GALLOWAY'S MEET THE CONSUMER'S NEED TODAY

People today ask for a maximum of edible meat with just sufficient fat for cooking purposes. The butcher, therefore, is not interested in a badly-fleshed, over-fat beast. The Galloway is one of the beef breeds with this good distribution of meat to fat. This world demand for leaner meat is largely responsible for the ever growing demand for Galloway cattle.

During the past two and a half years the number of breeders in Great Britain and Ireland has increased from 594 to 868—an average of 2 new herds per week.

# FORK FARM GALLOWAYS

The home of "Emblem of Winterhope", sire of "Plasgow Norseman" who was sold for the breed record of 13,500 gns.



Trim 11th of Fork Farm 2yr. old heifer by Emblem. Supreme Champion at Christchurch Centennial Show, 1962, and 3rd in "Meat & Wool" Cup.

Fork Farm Galloways are bred under the rigorous natural conditions of Central Otago, and stock from this herd have proved themselves on the toughest country in the South Island as well as in the show ring.



*Inquiries & Inspection Invited*

**W. F. HUNT**

**Fork Farm**

**P.B. Cromwell.**

**Phone: 130-M Wanaka**

## HAT TRICK FOR GALLOWAYS AT ROYAL HIGHLAND SHOW

At the Royal Highland Show for the years 1960-61-62 in the inter-breed contest, in competition with all other breeds, a team of Galloways won the coveted trophy. A newspaper correspondent from Edinburgh describes last year's contest:—

"One of the biggest judging draws at this show, which is held at Midlothian, just outside Edinburgh was the interbreed team cattle contest. For here in the judging ring were the finest cattle in the world which had been brought there from the famous Highland stud farms. It was a triumph for the third year running for the up-and-coming Galloways, still enlarging their empire in the beef world. These fine black and dun animals won on their solid meat capacity rather than on looks."

## OTHER NOTABLE SUCCESSES

Recently at the two largest Agricultural Shows in Scotland (Royal Highland and Ayr) Galloways produced a larger number of entries than any other beef breed.

The Galloway judge at the Royal Highland Show reported that it was the best show the breed has ever produced both in quality and in numbers. He said, "This was brought home to me very forcibly by the great praise the Galloway breed was given by prominent members of other beef breeds—this is the greatest compliment any breed can receive."

At the 1962 Scottish National Fatstock Show in Edinburgh a Galloway steer won the Supreme Championship over all breeds.

Also at Smithfield a polled Shorthorn-Galloway Cross caused a surprise in the young steer class in the first "live-and-dead" contest for 50 years. It was placed ninth in its class by the "live" judge but "hook" judges named it the winning carcass.

In the dairy cross classes at Smithfield Galloway bulls sired four winners—no other beef breed sired more than two.

A big proportion of British beef is produced by crossing a bull of a beef breed with a dairy cow, and it is in cross breeding particularly, that the Galloway is showing to advantage.

## WHAT FARMERS THINK ABOUT THE BREED

Referring to Galloways on Mt. Nicholas Station, a large block of mountainous country on the shores of Lake Wakatipu, an Otago breeder writes:—

"We have used Galloway bulls consistently on Mt. Nicholas. As a check we also used a bull of another breed so that we could always compare Galloway cross cattle on our country and under similar conditions with cattle of another cross. This comparison has enabled us to satisfy our minds that there is a job Galloways

# Little Mount Royal Galloways (PALMERSTON OTAGO)

The present Stock Bull, Jonathan of Snaigow, has an unbroken Show Record—twice Royal Show Champion and Supreme Champion of Breed. He is transmitting his splendid qualities to his progeny—at the last Canterbury Royal his progeny took all the major awards.



This photo by "Meat & Wool" speaks for itself. His outstanding qualities are his sound feet and constitution, good temperament, massive deep body and good head. Cross-bred stock by Jonathan usually top the market.

## JONATHAN OF SNAIGOW (Imp.) (Sire—Benbrack of Knocknarling)

The Breeding Policy of this Stud has emphasised good feet and legs and good temperament. Buy Galloway cows. The best breeding cow for the hills and the marginal lands is the pure Galloway cow—it gives hardiness, longevity and good milking qualities. Young Bulls, Heifers and cows available at reasonable prices, both Stud and Run. Special reduction for North Island purchasers.

Inspection invited. The Stud is situated on MAIN HIGHWAY, one mile South of Palmerston.

**See your Agent or direct to**

**R. G. CARRINGTON, No. 1 R.D. PALMERSTON, OTAGO**

can do that other breeds cannot do and that Galloways will thrive on our mountains where other breeds will not do at all. We still use a check bull and a trek through our valleys looking at cattle is really rather amazing. Stock by our check bull will always be found on valley floors or perhaps one or two hundred feet up the sides of the mountains. But, except in winter, you will always find the Galloway cross beasts at say, seven hundred to one thousand feet up the mountains. They go there themselves and there they thrive and do well and make the country more suitable for sheep, which, of course, is the all-important job with us. We have found that the Galloway or Galloway cross seem to prefer our longer unpalatable mountain plants that will not be eaten by sheep, and when the country is cleared of this type of pasture sheep move in automatically. Our surplus stock have done so well when sold into low country that we now receive quite a premium for our young stock at auction."

### *Comment by a Marlborough breeder:*

"I have found Galloways great doers on hard dry hill country. The calves by Galloway bulls are by far the best we have ever produced. In fact they are the great feature of the annual Blenheim calf sales. Galloways are also extremely quiet. A mob of yearlings and two-year-olds, turned out on a back country block and hardly ever seen for a year, were rounded up and driven home like a mob of sheep."

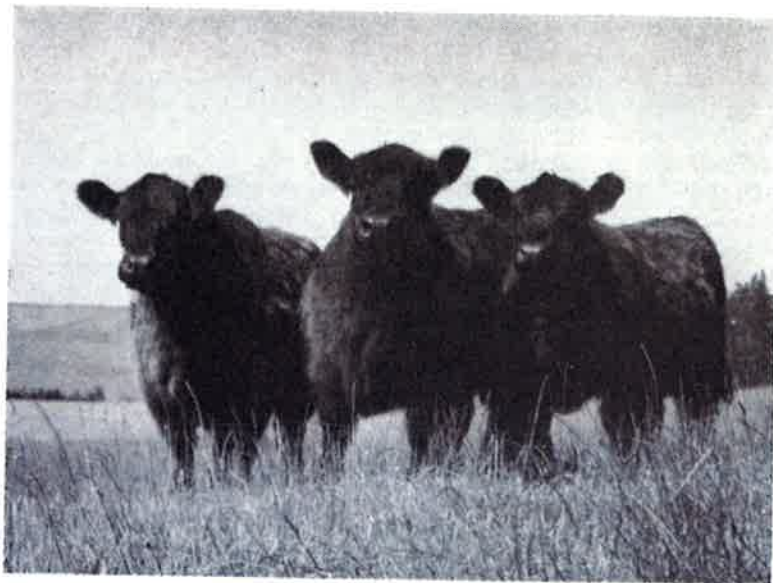
### *Crossing Results. A Hawkes Bay farmer writes:*

"The Galloway yearlings stand out on their own. The cows that went to the Galloway bulls were done harder than the others but the calves were thick and solid with no trouble although the cows were living mostly on their imaginations at calving time."

Galloway cows and calves.







**Morven of Tempello (centre) and her two daughters  
Rosamond of Tempello and Portia of Tempello.**

Morven was Champion at the 1962 Hawkes Bay Royal Show, where Rosamond was Reserve Champion and Portia Junior Champion. Portia also won the Murray-Usher Cup for heifers two years old and under.

This team was also successful at the Canterbury Centennial Show, the Marlborough South Island Championship Show and the Nelson Show where Rosamond won the award for the best beef animal.

★ ★

*Two bulls shown were always either  
Champion or Reserve Champion*

## TEMPELLO GALLOWAYS

*for cattle of proved conformation and  
reared under hard conditions*

*Enquiries and inspection invited*

**R. C. Grigg, Tempello, R.D.2. Blenheim**

**TELEPHONE 349-U BLENHEIM**

## GALLOWAYS AS I FIND THEM AFTER TEN YEARS OF BREEDING

*By a Wairarapa breeder*

"First and foremost Galloways are very hardy, are able to survive even on heavily grazed sheep country, and are great foragers. They will climb into any rough corner of fern, scrub etc. and trample and clean such places up in great style. They have cleaned every bit of fern off a very rough face exposed to the south, which had been a problem for many years before using Galloways.

I have found Galloways very easy to handle, responding to gentle treatment. The bulls I have had have all been very docile. The cows are good mothers but do not like to be handled with dogs when they have calves at foot. I have been able to fatten and sell the steers at 2½ years and this year sold 17 chiller grade to the Waingawa works at an average weight of 621 lbs. This line was very well commented on by the works manager.

I am carrying out an experiment by crossing Galloway cows with a white Shorthorn bull. The first crop one year old and are a fine looking lot, being mainly blue roan. They have grown extremely well and are in such forward condition that I hope to get some of them away fat at 20 months. This year's crop of calves by the same bull seem to be even better.

Galloways are very suited to high hill farms close to the mountain ranges where there is a very heavy rainfall. They do not mind wet or cold as their heavy outer coats of soft hair acts as a thatch and keeps the undercoats dry, in fact, they never get wet to the skin no matter how hard it rains.

The sum total of these characteristics is a beast that is close to my ideal of a perfect beef breed."

## A CHANGING DEMAND

It is generally recognised that the producer of most commodities must aim at producing what his customers want. This particularly applies to foodstuffs and should definitely apply to meat.

Those who have taken an interest in the marketing of our meat have for long enough striven to have our lamb, mutton and beef slaughtered at weights most acceptable to our customers. This has largely been accomplished through the agency of our Meat Board.

But as far as beef is concerned a discrimination against over-fat meat is becoming more and more evident. This "wind of change" blew up soon after the end of World War II. Consumers objected to paying for fat which they did not want. They began to demand good tasty red meat with a minimum of wastey fat. The wind blew stronger as our main customers—the housewives—grew more diet conscious and began to discriminate against animal fats in their diets.

---

# AWARUA GALLOWAYS

- ★ BRED UNDER RUN CONDITIONS.
- ★ ENTIRELY GRASS FED.
- ★ WILL SHIFT ANYWHERE.



28 "Awarua" chiller steers.

*Herd founded 1950 with importation of three heifers and bull "Denis of Gateside", subsequent winner of Meat & Wool Cup at the Christchurch Show.*

**R. E. CAMPBELL & SON**

**Mt. Bruce, Masterton**

Enquiries Welcome    ::    Inspection Invited

---

Women are avoiding all fats as a plague and doctors are warning men to abstain from animal fats or suffer heart attacks and hardening of the arteries.

Animal fats may or may not be the villain in the picture but the discrimination is there and we must live with it.

Herein lies the opportunity for the Galloways. Nature has favoured the breed for meat type by keeping them intact during the time when tallow was king in the show-ring. She has given them quite a head start on others in the two most important requirements of the modern demand, in that they have naturally large rib-eyes, covered with the right amount of fat to suit the modern trend.

Add to this the fact that they can be run very economically on rough grazing and when finished off give a high yield of saleable lean meat, nicely marbled and the reasons for their increasing popularity overseas can be clearly seen. They meet the changing demand.

The Galloway is the breed par excellence for crossing with dairy cows, producing well-boned, polled, black calves.



**No other breed can make  
your unproductive land so profitable**



have been closely associated with the Galloway breed from its introduction to New Zealand. Through our London Branch were imported many of the "pioneers of 1949", with close links then and since established with such forefront studs as Lawton, Bendemeer, Fork Farm, Temfells, Taree, Claverhouse, Kowai, Karehana, Mt. Linton and others.

United Kingdom importations entrusted to us are given specialised attention, while our Dominion and world wide overseas connections assure regular outlets for stud cattle available for private or auction disposal.



The sign of service in every field of the stud breeding and farming industries.

Address Enquiries . . .

**STUD STOCK DEPT., BOX 1895, WELLINGTON  
OR BOX 601, PALMERSTON NORTH**

## WHAT BUTCHERS THINK ABOUT THE BREED

The following comes from Mr. W. S. Duke, Manager Wm. Duke & Sons, Butchers, Dunedin:—

I have found that the black Galloway cross gives a high percentage of beef of the best quality. There is a considerable depth of flesh when the side is quartered which is important from the butchers angle because of the high value of meat in this region—the wing rib and sirloin roast. There is an absence of excess fat and the evenness of fat distribution seems to be characteristic of the breed. I have no hesitation in buying a Galloway beast whenever I see one but unfortunately there are not yet enough of them on the market.

### *Comments by a Wanganui Butcher:*

The Galloway-cross cattle that have been killed in this district to date have given every indication that they will fulfill the retail trade's requirements. They give a fleshy carcass of very good eating quality with a minimum of waste fat. This latter characteristic is of utmost importance today when any meat that is over-fat is almost unsaleable.

## GALLOWAYS ARE

Proving themselves in cross-breeding. The rise in popularity of the Galloway bull for crossing purposes has been phenomenal and they are being used successfully throughout the world on all breeds. They pass on to their progeny the advantages of 100% polling, ruggedness and strength.

New Zealand has large areas of marginal, hilly and poor pasture land that can be turned to profit. The Galloways are suitable by nature and centuries of breeding to populate and improve this type of country. The breed is expanding rapidly in the North Island but in the South where there is so much rugged country there is need for a greater recognition of the Galloway with its ability to thrive under both poor and good conditions. Although the Galloway is the hardy type able to withstand the most extreme climatic conditions, it can come into the show ring and more than hold its own.

# LYNTON DOWNS STUD GALLOWAYS

HERD FOUNDED WITH CATTLE ALL IMPORTED  
FROM LEADING SCOTTISH BREEDERS.



*Inspection Always Welcomed  
by  
The Manager*

**LYNTON DOWNS LIMITED**

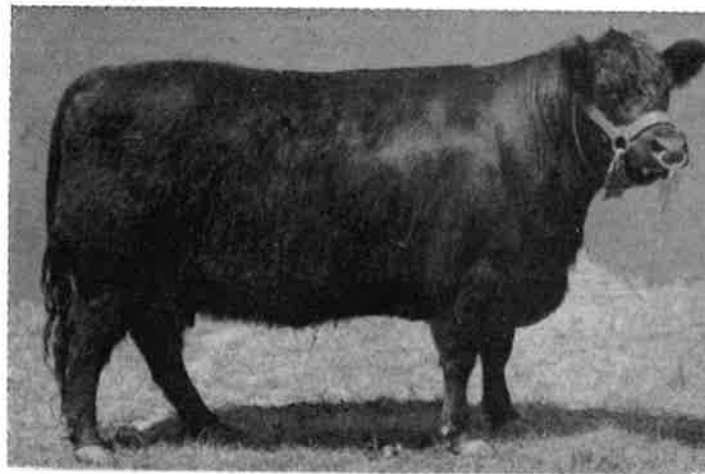
INLAND ROAD KAIKOURA

:: :: ::

PHONE 32-5 KAIKOURA



**Gilchristland Champion (Imp.)**  
**Champion Galloway Bull, Canterbury Centennial**  
**Show 1962**



**Galloways are good mothers.**

## A NORTH ISLAND BACK-COUNTRY MAN'S EXPERIENCE

"I am managing a large farm in an early stage of development, running some 8000 sheep and wintering 600-800 head of cattle . . . My plan is to eventually have Galloway X cattle over all my hill country to break in as no other cattle will. All my younger cattle have Galloway blood and we are getting astonishing results in their aptitude to forage and hold good health and condition where other breeds would be a headache to handle. We find that some of our steeper country—some of it previously inhabited by only goats and venturesome sheep—is now being brought in to a reasonable state by our young Galloways and they practically never make a mistake in their footing. Where we previously lost a large percentage of other breeds we have had practically no loss in our Galloways. On our bush farm we wintered 430 head including 200 cows without hay or crop with the loss of only three head while our neighbours are perpetually worried by losses. We find that even small late calves when taken from their mothers will survive and even flourish anywhere they may be left".



---

**IF YOU ARE VISITING THE HOMELAND OF THE**

# **GALLOWAY**

**PLEASE CONTACT US! WE WILL BE DELIGHTED  
TO OFFER ALL POSSIBLE ASSISTANCE AND  
MAKE ARRANGEMENTS FOR HERD VISITS, ETC.  
FULL DETAILS OF THE SOCIETY'S SALES SENT  
ON REQUEST.**

---

## **THE GALLOWAY CATTLE SOCIETY OF GREAT BRITAIN & IRELAND**

**(Secretary: Donald Aitchison), Normandale, Castle-Douglas,  
Scotland.**

---

### **GALLOWAYS GIVE**

Weight-for-age. An important factor, and Galloways will not disappoint in this sphere. They showed the highest weight-for-age ratio of *any* breed at Scotland's premier Fatstock Show in 1961—the Scottish National Fatstock Show in Edinburgh.

### **GALLOWAYS GIVE**

Carcase weight percentage. A strong feature with Galloways, the majority killing-out at approximately 60%. At the 1960 Royal Smithfield Fatstock Show in London, the highest carcase weight percentage was from a Galloway—69.03%.

### **GALLOWAYS GIVE**

The advantages of adaptability—they withstand extremes of temperature and climatic conditions and are proving themselves under tropical conditions in many places—and at 10,000 ft. in the Peruvian Andes. Galloways will forage and live where others die.

### **GALLOWAYS GIVE**

The opportunity of purchasing breeding stock of the highest quality at prices which are commercially realistic and not exaggerated.

### **GALLOWAYS ARE**

One of the oldest breeds in Great Britain and can be traced back to the 17th century. Their original characteristics of size, strength, ruggedness, stamina and foraging ability have been jealously guarded and religiously maintained.

### **GALLOWAYS ARE**

A breed noted for longevity, and it is no exception to find cows breeding regularly at from 12 to 15 years of age. The milk production of the Galloway cow and its ability to rear calves under all conditions is one of the most notable characteristics of the breed. The sustained lactation of the Galloway cow ensures a strong and well-nourished calf at weaning.

**BEST IMPORTED BLOOD**

★

**AN**

**OPPORTUNITY FOR NEW**

**AND ESTABLISHED BREEDERS**

★ FEMALES, STUD BULLS

★ RUN BULLS

★ ALWAYS AVAILABLE

★ PROVEN SHOW STOCK FOR SALE

★

Inspection Invited

**TAREE STUD**

**Whitmores Road, Matakana,  
North Auckland**

**Phone 18-K Matakana**

***Breeders Whose Assistance Has Made Possible The  
Publication of This Booklet***

Brown, H. H., Paparoa, Middle Road, Raetihi.  
Buckleton, J. G., Whitmores Road, Matakana, Northland.  
Buckleton, R. G., Parewanui Road, Bulls.  
Campbell, R. E., Mt. Bruce, R.D.1. Masterton.  
Carrington, R. G., No. 1 R.D. Palmerston, Otago.  
Cooper, J. F., Blairich, P.B. Blenheim.  
Grigg, R. C., Fairhall R.D.2. Blenheim.  
Hunt, W. F., P.B. Cromwell.  
Jessep, B. E., Peak Hill, P.B. Christchurch.  
R. J. Law & Sons, Shannon.  
Littlejohn, J. H., No. 1 R.D. Wanganui.  
Lynton Downs Ltd., Care Nat. Mortgage & Agency Co. Box 292, Ch'ch.  
Massey College, P.B. Palmerston North.  
McDonald, R. J., Box 60 Seddon.  
Smith, A. T., Box 163 Cambridge.

***Other Registered Breeders***

Barber, W. J., R.D.111 Kaitaia.  
Black, J. M., R.D. Reporoa.  
Buckleton, Mrs. O. M., Matakana, Northland.  
Coutts, L. G., Box 34, Palmerston, Otago.  
Cowan, A. A., Box 44, Fairlie.  
Davidson, J. S., No. 4 R.D. Whangarei.  
Deans, H. H., Darfield R.D. Christchurch.  
Gardiner, L. C., Lake Hills, Waiau.  
Gibson, Est. H., R.D. Cromwell.  
Hutchinson, C. F. & C. A., R.D. Parua Bay, Whangarei.  
Jenkins, J. E., Holmburn, Martinborough.  
Newton, H. B., Urenui, Taranaki.  
Newton, H. B., Nrenui, Taranaki.  
Parris, J. O. M., R.D.2. Wakefield, Nelson.  
Rawstron, G. A., Hororata, Canterbury.  
Richardson, A. O., P.B. Havelock.  
Ross, D. W., P.B. Kurow.  
Rose, R. E. and A. M., No. 1 R.D. Otorohanga.  
Sim Bros., No. 4 R.D. Wanganui.  
Smith T. A., No. 7 R.D. Otorohanga.  
Waddell, R. N., P.O. Patutahi, Gisborne.  
Weinberg, C. E., R.D. Matiere, King Country.  
Whalan, W. J. & Sons, Box 2 Kurow.  
Wilson, A. G. & Co., Box 67 Palmerston, Otago.

SEE YOUR AGENT OR WRITE DIRECT  
TO ANY OF THE ABOVE BREEDERS.

TELEPHONE 46-889

**"STRAIGHT FURROW"**

CIRCULATION EXCEEDS 46,500

PUBLISHED TWICE-MONTHLY

G.P.O. BOX 1654 WELLINGTON

# CLAVERHOUSE GALLOWAYS



**"Claverhouse King".**

Founded in 1948 with the first shipment of Galloway females to New Zealand from the famous Scotch studs of Gilchristland, Lea Hill and Craigmuir with the outstanding sire Linfairn Ian.

These bloodlines are represented in many New Zealand studs through Claverhouse cattle and Linfairn Ian. Claverhouse Galloways have won many Royal and other show championships in natural condition. Bred and reared on windy sand country with little shelter.

Stud and run bulls and some females usually available. Inspection invited.

## **R. G. BUCKLETON**

Claverhouse Galloways  
Parewanui Rd., Bulls, R.D.2.  
Phone 154 Bulls.

# LAWTON GALLOWAYS



**Falbae Perfect (Imp.), a Foundation Cow.**

A select herd descended from some of the best Galloway herds in Scotland: five consignments—11 head—have been imported: three lots personally selected by R. J. Law on visits to Great Britain.

The latest was Grange Charity 77th—G. dam Grange Charity 56, Royal and Highland Royal Champion 1957. Dam, Grange Charity 47th from that noted line of Charities bred by Jas. Biggar, Esq. of Chappleton, Scotland.

The herd contains many prizewinners at the main shows in New Zealand. The latest in March 1963 at the Chiller Beef Competition at Wanganui. Steers from Lawton herd won 1st prize and 4th prize and S. S. Timbs Challenge Cup; 1st prize for pen of four and City of Oxford (England) Master Butchers Assn. Challenge Silver Cup.

Alson, on hook, New Zealand Meat Producers Board Diploma for exhibit selected in New Zealand for London judging.

**Breed from the Best...**

**R. J. LAW & SONS**

**TE ROHenga, SHANNON, MANAWATU**

**Telephone 22, Shannon**